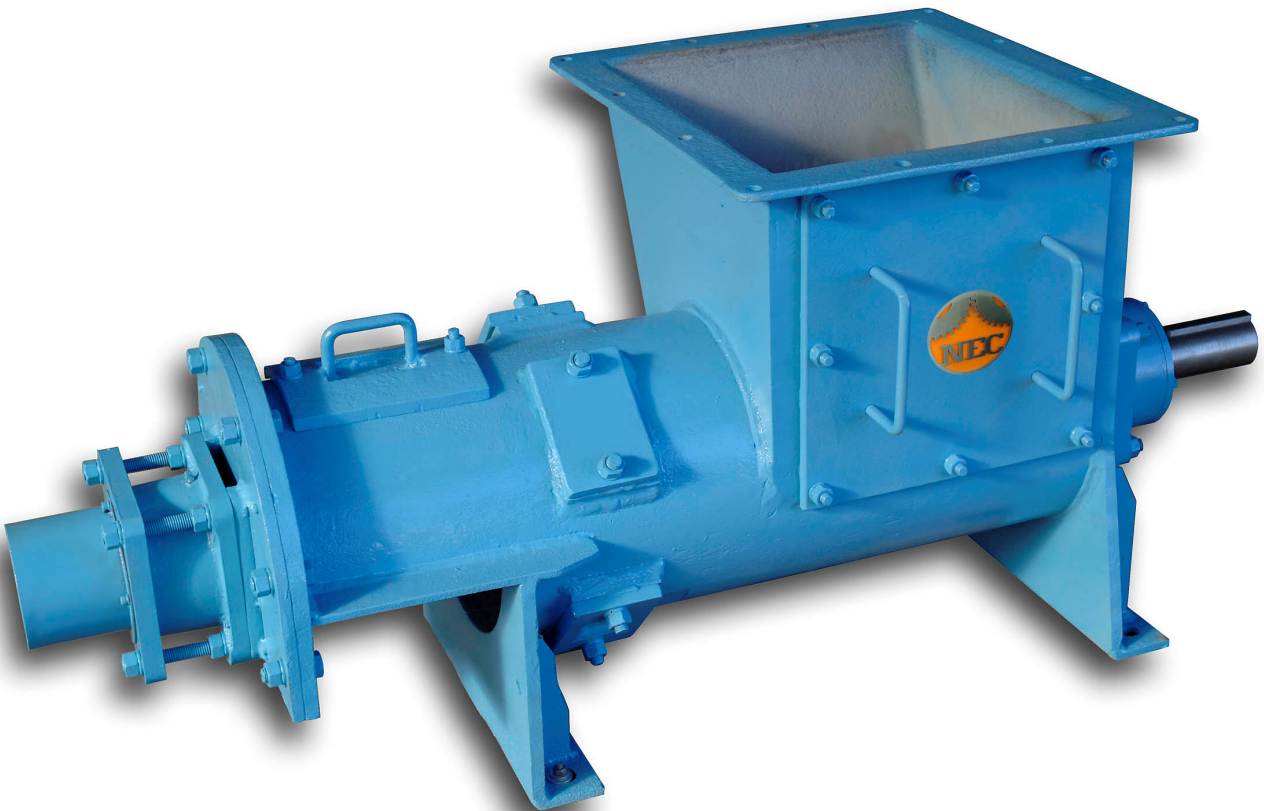




Napier Engineering & Contracting Ltd

GUT CUTTER TYPE GC3



**Rapidly reduces the size of soft offals
and similar animal and fish material.**

**This rugged machine is designed for
reliable service in the meat industry.**

Specifications

Gut Cutter GC3 machine only (including flywheel pulley)

Dimensions

Weight	Width	Length	Height
760 kg	665 mm	1555 mm	700 mm

Surface Finish

External:

Prime paint and topcoat blue enamel.

Internal:

Rust preventative coating on bare metal.

(Full hot dip galvanised body, anvils and hammers are available to special order)

Construction

Body:

Fabricated in mild steel of continuous welded construction.

Drive Shaft:

High tensile steel shaft, fully machined.

Bearings:

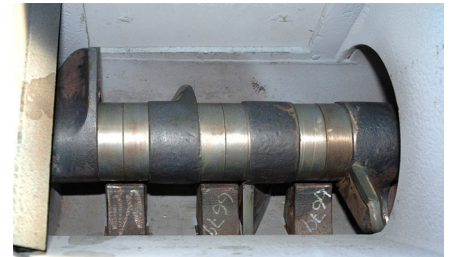
Self-aligning spherical roller bearings in sealed housings.

Hammers:

High tensile steel special form and hard surfaced, ground leading edges and keyed to shaft.

Anvils:

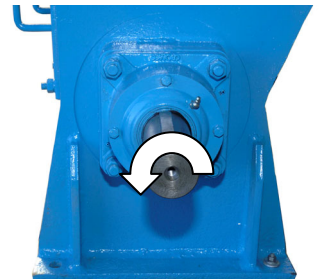
Cast steel special form with hard surfaced and ground leading edges. They are bolted into body of the gut cutter and can be removed for sharpening or replacement.



Drive Requirements

The standard drive arrangement, as supplied, is a 7 groove flywheel pulley mounted on a shear-pin hub fitted to the gut cutter main shaft. This protects the machine and drive components against severe overload and possible damage, should solid tramp material enter the machine.

The shaft should be driven in an anticlockwise direction at approximately 200 rpm. A 6 pole, 15 kW, 3 phase motor is recommended. (NEC can supply the motor, baseplate and guards)



Capacity

Machines have 300 mm diameter outlet snouts and have capacities (depending on material) of up to 7300 kg/hour, when driven at 200 rpm by the recommended motor. They can handle small stock bones in limited quantities.



Foundation

The machine and drive components should ideally be mounted on a concrete plinth or floor, as this reduces the noise when operating.

If it is mounted in an elevated position, using a steel support frame, the structure needs to be heavy and solid enough to withstand the vibration and jolting of the unit during operation.

Full specifications and dimensions are available on application.